

# MARKET LEADERS IN FILTRATION

## RONA™ EXL BAG

EXTENDED LIFE FILTER BAG

Filter

Extended life felt offer optimized depth filtration with greater dirt holding capacity. They can be captured within the media and prevented from extrusion or migration under differential pressure loading.

### FEATURES

- Needled felts have long been the media of choice for tough industrial applications. RONA™ EXL felts offer depth filtration with greater dirt capacity while maintaining efficiency. An optimized fibre mix and depth construction immobilizes contaminants to prevent blinding off surface area. The result is 2 - 5 times the service life in many difficult applications
- Owing to the RONA™ EXL's optimized depth construction the RONA™ EXL is an ideal alternative to handle tricky contaminants such as gels or emulsions.
- Seamless construction ensures bypass free performance
- Optimized depth loading media for high loads
- Rugged surface finish holding for two to three times service life
- Deep media structure to secure soft particles, emulsions and gels
- A variety of sizes and materials are available to meet your needs

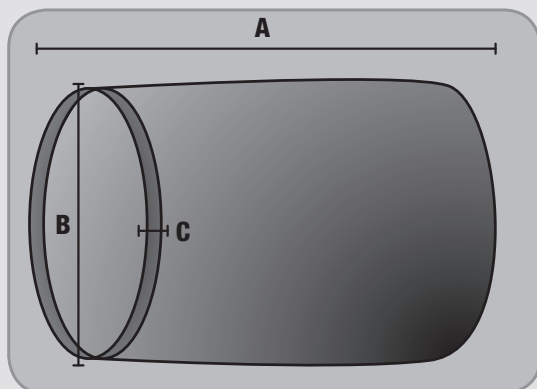
### APPLICATIONS

- Can filter normal temperature or high temperature
- Dairy Industry
- Widely used in metallurgy, chemical industry, building material, smelting, generating electricity, pottery, machinery, mine, petroleum, dyestuffs, food, grain processing
- Ideal medium to separate liquid from solid or purify gas

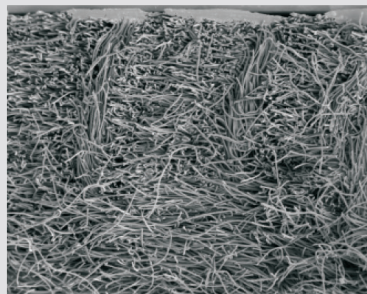
### MATERIALS OF CONSTRUCTION

- Mono Monofilament mesh - this surface filtration media removes particles using its mesh structure. The fibres are thermally bonded and the mesh material does not exhibit fibre migration. Micron levels range from 25 to 800 micron
- Needle felt - features a three dimensional structure of high porosity enabling high flow rate and high particle retention. High quality needle felt shows a 60-70% filtration efficiency. High quality needle felt with heat treatment surface has no fibre migration without reducing flow rate
- Melt -blown non-woven - multi-layer melt-blown depth filter media is made from polypropylene micro-fibre and consist of three layers. The inner layer is similar to woven polypropylene which maintains mechanical stability, the intermediate layer is melt-blown non-woven structure with 90% porosity with an efficiency level of 90-98% with large particle retention and the external layer is structured polypropylene needle felt. This bag shows good absorption capacity of oils and hydrocarbons
- Galvanised Steel ring, Stainless Steel ring, Steel ring, no ring or Plastic Flange filter bags are available. All Progressive's bags are ready to use, our style of filter bags are sewn on the inside of the bag so that you don't have to turn the bag inside out. We also design our bags so that the bag diameter is bigger than the ring diameter, thus no tension is applied to the sewn area. This prevents any damage to the bag and ensures no bypass of liquid through the bag
- Plastic flange filter bag with thermal bonded plastic offers 100% filtering by absolutely preventing bypass. As the differential pressure increases the integrity of the sealing unit increases. The plastic flange is available on the polypropylene and polyester range

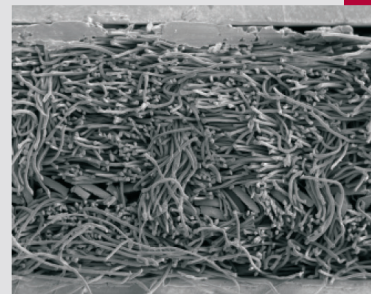
## MEASUREMENTS



## SEM IMAGE



SEM image of XL media



SEM image of standard felt

## OPERATING CONDITIONS

FIBER TYPE	MAX TEMP (OC)	ALKALINES	ACIDS	OXYDIZING AGENTS	ALCOHOLS	ESTER	SOLVENT			OIL & FATS
							ALIPHATIC	AROMATIC	CHLORINATED	
Polyester Felt	150-170	A/B	A/B	B/C	A	A	A	B	A	A
Polypropylene	90-100	A	A	A	A	A	A	C	B	A
Mono Monofilament	150-170	A/B	B/C	B	A	A	A	A	A	B/C

## NOMINAL PARTICULATE RETENTION

NOMINAL		1	5	10	25	50	80	100	125	150	200	250	300	400	600	800
Felt	PE	•	•	•	•	•		•			•					
	PP	•	•	•	•	•		•			•					
Mesh	NMO				•	•	•	•	•	•	•	•	•	•	•	•
High Efficiency	PE	•	•	•	•											
	PP	•	•	•	•											

## ORDERING INFORMATION

RANGE	FILTER MEDIA	MICRON RATING	A	C	BAG STYLE
<b>209-EXL</b>	<b>PE:</b> Polyester Felt	<b>0.5 - 200</b>	<b>167</b> 16"	7" Ring	<b>BW:</b> B-Style Welded Collar
	<b>PP:</b> Polypropylene	<b>1-200</b>	<b>327</b> 32"		
	<b>NM:</b> Mono Monofilament	<b>25-1250</b>			

Example: 209-EXLNM<sup>2</sup>00167BW

### Australia Office:

P: +61 (0) 3 9872 6811  
 F: +61 (0) 3 9872 6822  
 E: Feedback@progressivegroup.com.au  
 17 Redland Drive, Mitcham, 3132, Victoria, Australia  
 www.progressivegroup.com.au

### New Zealand Office:

P: +64 (0) 9 951 3142  
 F: +64 (0) 9 951 3143  
 E: Feedback@progressivegroupnz.co.nz  
 17B Farnham Street, Parnell, Auckland, 1052, New Zealand  
 www.progressivegroupnz.co.nz