

# MARKET LEADERS IN FILTRATION

## RONA™ HI-FLOW

LARGE FILTRATION AREA

Filter

The long service life and high flow rate result in low investment and less manpower in many applications.



### FEATURES

- Gradient pore structure
- High surface area
- Absolute rating is available
- Surface area 5.2m<sup>2</sup>/40"
- All contaminants can be removed within the cartridge because of the flow direction
- It has a 6 inch/152mm large diameter, and is coreless, single open ended with an inside to outside flow pattern
- The large filtration area of the cartridge reduces the area required for housing when compared to standard pleated cartridges

### APPLICATIONS OF PRODUCT

- Prefiltration of RO, Pretreatment of sea water desalination
- Condensate water filtration, hot water recovery in power generation
- API, solvents, and water filtration in BioPharm market
- The filtration of bottled water, high Fructose, edible oil, soft drinks, and milk, beer and wine.
- Paints and coatings, Petrochemical, Refineries
- Microelectronics, film, fiber and resin

### OPERATING CONDITIONS

#### Removal Rating:

Normal :1,1.5, 2, 3, 5, 10, 15, 20, 40, 70 micron

#### Maximum Operating Temperature:

Pleated glass fiber:121°C;

Pleated PP: 82°C;

#### Maximum Differential Pressure:

Pleated glass fiber: 3.5 Bar at 82°C

Pleated PP: 3.4Bar at 82°C

#### Recommended Change out Differential Pressure:

2.4Bar at 20°C.

PRODUCTS	RONA HI FLOW	HIGH FLOW FILTER OF "COMPANY-A"	HIGH FLOW FILTER OF "COMPANY-B"
Filtration Area	5.2m <sup>2</sup> /40inch	*12m <sup>2</sup> /40inch	*5.16m <sup>2</sup> /40inch
Filter Medium Thickness	2.2mm	*0.8mm	*2.2mm

\*Data from laboratory test report

### MATERIALS OF CONSTRUCTION

**Filter media:** Pleated glass fiber,

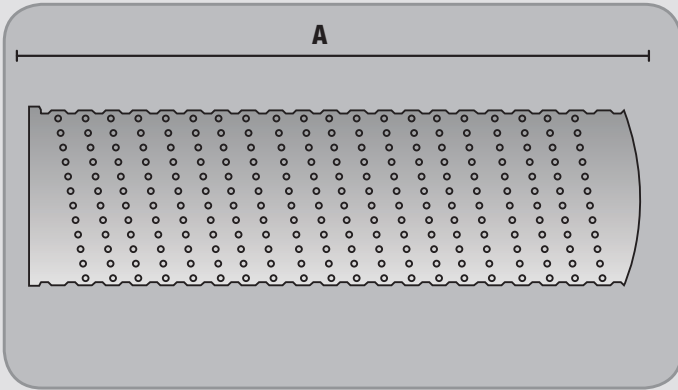
Pleated depth Polypropylene (PP) PP Melt blown

**Support/Drainage:** Polypropylene (PP)

**End caps:** Glass fiber reinforced Polypropylene

**Seal Material:** EPDM

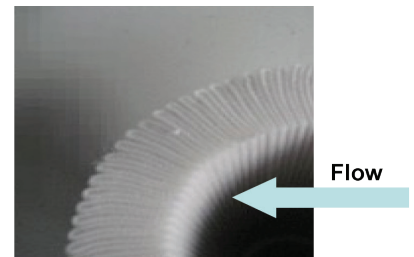
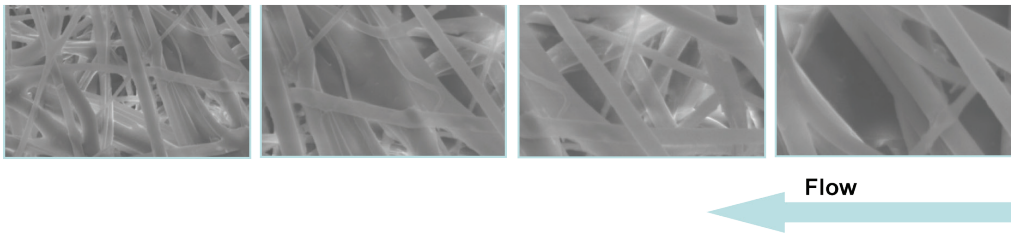
## MEASUREMENTS



## FLOW RATES

Micron Rating	RONA HI FLOW	Company-B High flow filter 4.5um
≥2µm	99.848%	*99.36%
≥5µm	99.98%	*99.68%
≥10µm	99.995%	*99.91%
≥12µm	100.00%	*99.95%
≥25µm	100.00%	*99.99%
≥35µm	100.00%	*100.00%
≥50µm	100.00%	*100.00%

\*Data from laboratory test report



The filter utilizes multi-layer filter medium, with graded pore size from coarse(upstream) to fine (downstream) , offer higher dirty holding Capacity.

## ORDERING INFORMATION

CARTRIDGE	MEDIA TYPE	CARTRIDGE LENGTH / A	MIRCON	O-RING MATERIAL
<b>206-RHF150</b>	<b>PP</b> :Pleated	<b>2000</b> :20"	<b>001</b> :1µm	<b>E</b> :EPDM (Ethylene-Propylene)
	<b>GF</b> :Pleated Glass Fiber	<b>4000</b> :40"	<b>1A5</b> :1.5µm	
	<b>GF</b> :Resin Bonded Glass	<b>6000</b> :60"	<b>0200</b> :2µm	
			<b>0300</b> :3µm	
			<b>0500</b> :5µm	
			<b>1000</b> :10µm	
			<b>1500</b> :15µm	
			<b>2000</b> :20µm	
			<b>4000</b> :40µm	
			<b>7000</b> :70µm	

Example: 206-RHFPP2000100E

### Australia Office:

P: +61 (0) 3 9872 6811  
 F: +61 (0) 3 9872 6822  
 E: Feedback@progressivegroup.com.au  
 17 Redland Drive, Mitcham, 3132, Victoria, Australia  
 www.progressivegroup.com.au

### New Zealand Office:

P: +64 (0) 9 951 3142  
 F: +64 (0) 9 951 3143  
 E: Feedback@progressivegroupnz.co.nz  
 17B Farnham Street, Parnell, Auckland, 1052, New Zealand  
 www.progressivegroupnz.co.nz